

The content in this preview is based on the last saved version of your email - any changes made to your email that have not been saved will not be shown in this preview.



*January 2020 - In This Issue:*



**IMPACT REPORT FOR 2018-19**

**MARY BAYDARIAN AWARDED**

**MOUNTAIN FAMILY HEALTH CENTERS GRANTED \$150K**

**CHOOSE HEALTH INSURANCE BEFORE JAN. 15**

**COURT DECISION ADDS TO ACA CONFUSION**

**CONGRATULATIONS TO OUR CARE COORDINATION TEAM**

**SIGN UP FOR HEALTH SOLUTIONS**

**IN THE NEWS & WHAT WE'RE READING**



**MOUNTAIN FAMILY IMPACT REPORT TO THE COMMUNITY 2019**

Mountain Family Health Centers is a 501(c)(3) nonprofit Federally Qualified Health Center dedicated to providing high quality, integrated primary medical, behavioral, and dental health care in the communities we serve, with special consideration for the medically underserved, regardless of ability to pay. We proudly serve more than 21,000 patients in Garfield, Eagle, Pitkin, and Rio Blanco counties.

[View report](#)



**MARY BAYDARIAN AWARDED THE COLORADO HUMAN SERVICES DIRECTOR OF THE YEAR**

Congratulations to Garfield County Human Services Director Mary Baydarian on receiving the Colorado Department of Human Services Director of the Year award in December 2019. According to MFHC CEO Ross Brooks, "I first met Mary in July 2012 at a gathering of the West Mountain Regional Health Alliance (WMRHA). Following that first meeting, Mary quickly reached out to partner with our organization, Mountain Family Health Centers (MFHC), on improving access to health insurance coverage and healthcare for vulnerable populations in Garfield County. Mary works unassumingly, and effectively, to maximize Medicaid and CHP+ benefits for Garfield County residents. She has been a strong partner and proponent of increasing access to affordable medical, dental, and behavioral healthcare through MFHC's Glenwood Springs, Rifle, and Parachute (dental SMILES) health centers."

[More](#)

CONTACT US AT:  
970-945-2840  
[contact@mountainfamily.org](mailto:contact@mountainfamily.org)  
[www.mountainfamily.org](http://www.mountainfamily.org)

GIVE

## MOUNTAIN FAMILY HEALTH CENTERS GRANTED \$150K FOR BEHAVIORAL HEALTH SERVICES IN EAGLE COUNTY

Vail Resorts Chief Executive Officer Rob Katz and his wife, Elana Amsterdam, New York Times bestselling author and founder of Elana's Pantry, announced significant contributions totaling more than \$2.8 million to further strengthen emotional wellness programs in more than ten mountain communities where Vail Resorts operates. The second annual distribution of behavioral health grants issued by the Katz Amsterdam Charitable Trust (KACT) benefits over 40 non-profit organizations to reduce the stigma of mental illness, improve access to mental and behavioral health services and support collaboration within and among mountain communities.



[More](#)

## CHOOSE HEALTH INSURANCE BEFORE JAN. 15 Learn More About Medicaid and Private Insurance

January 15 is the deadline for choosing health insurance for February 1. We can help you sign up for Medicaid or buy private coverage. Colorado residents can now apply for financial assistance to help purchase health insurance through [Connect for Health Colorado](#) for the upcoming year. Call us at 833-273-6627 or click on the links below for more information.



[More \[English\]](#) [Más \[Español\]](#)

## CIRCUIT COURT DECISION ADDS TO ACA CONFUSION

**Decision Does Not Affect Current Health Insurance Options Coloradans Have Until Jan. 15 to Enroll**

The decision by the Fifth Court of Appeals against the Affordable Care Act is bad news for the majority of Americans whose health care coverage has been helped in one or more ways by the provisions of the ACA. The decision that the ACA's insurance mandate is unconstitutional and that the lower court must analyze if the rest of the law can be left in contact extends the uncertainty and confusion this case and other attacks on the ACA have raised.

[More](#)



## CONGRATULATIONS TO OUR CARE COORDINATION TEAM FOR THE ACCOUNTABLE HEALTH COMMUNITIES MODEL

### MFHC Rifle wins the award for Highest Navigation

The AHCM Care Coordination Teams are an asset to our community. They have diligently worked to provide the right service to the right people. They have supported the populations identified with a social need through the AHCM Screener. The success stories we hear from them as the leads warm our hearts. We are grateful for all your hard work and positive impact in our community.

Mountain Family Health Center - Rifle  
Team: Beth Quinn and Laura Ortega

## SIGN UP FOR HEALTH SOLUTIONS

### New Members Enrolling Now

Have you heard about Health Solutions? Our new medical, dental and behavioral health service offers affordable health care for employers, employees and dependents. No deductibles, copays or limits. We're signing up members now.

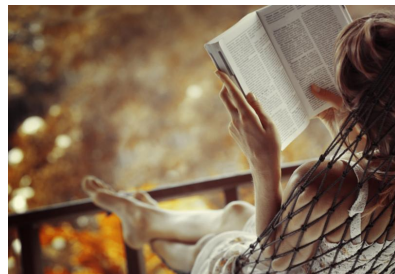
For more information [click here](#), call 970-456-1233 or email [HealthSolutions@mountainfamily.org](mailto:HealthSolutions@mountainfamily.org).



## IN THE NEWS & WHAT WE'RE READING

### What's Causing Colorado's Decline in Medicaid and CHIP Enrollment?

Over 1.2 million Coloradans rely on Medicaid or Child Health Plan Plus (CHP+) for comprehensive health services that foster child development, help adults maintain employment, deliver needed mental health and substance use treatments and keep people with disabilities in their communities. [Read article](#)



America's Largest Health Insurer Is Giving Apartments to Homeless People

In 1986, Congress enacted a law to bar hospitals from turning away patients who are unable to pay. Any hospital with an emergency room that participates in federal health programs must evaluate and stabilize every patient who comes through the door, including those who are uninsured, indigent, addicted to drugs, or mentally ill. [Read article](#)

CONTACT US AT:  
970-945-2840  
[contact@mountainfamily.org](mailto:contact@mountainfamily.org)  
[www.mountainfamily.org](http://www.mountainfamily.org)

GIVE

STAY CONNECTED

