

FEBRUARY 2018 - In This Issue:



A LETTER FROM OUR CEO

INTRODUCTION TO THE BASALT INTEGRATED HEALTH CENTER

BUILDING HEALTH FOR ALL

IMPACT

TIMELINE

WHERE THE BASALT "BUILDING HEALTH FOR ALL" CAPITAL CAMPAIGN IS TODAY

HOW TO HELP

CONCLUSION

# Building Health for All



**THANK YOU FOR STANDING UP FOR COMMUNITY HEALTH CENTERS**

By Ross Brooks, Chief Executive Officer, Mountain Family Health Centers

February 2018

Thank you to our patients, staff, board, partners, and communities for standing up on behalf of community health centers (CHCs) nationally and Mountain Family Health Centers (MFHC) here at home. Your advocacy and thunderclap were heard nationally, and Congress acted early February 9th to restore federal funding to CHCs for two years.

Mountain Family Health Centers would like to thank Senator Michael Bennet, Senator Cory Gardner, Congressman Scott Tipton, Congressman Jared Polis, and the entire Colorado Congressional delegation for their bipartisan support of CHCs, and the many actions they took to advocate for the restoration of our federal funding. These included sponsoring and co-sponsoring legislation, conversations with Senate and House leadership, letters, ongoing social media posts, and of course their votes.



With the uncertainty about our federal CHC funding put to rest, MFHC can return to doing what we do best; providing high-quality, integrated medical, dental and behavioral health care to more than 19,000 patients, with a special emphasis on the underserved, regardless of ability to pay. We would like to thank those involved, and to let the community know about our exciting plans for expansion to achieve this mission.

**What's next for Mountain Family Health Centers? We are going full steam ahead raising the capital for our clinic expansions in Basalt and Edwards to serve thousands of Coloradans. The MFHC Basalt Integrated Health Center is scheduled to open in the Fall of 2018, and in early 2020 the MFHC Edwards Regional Integrated Health Complex will be built and opened. These will be state-of-the-art health centers with fully integrated medical, behavioral and dental health care, and for the first time at Mountain Family, internal pharmacy services. We look forward to the community's continuing support of Mountain Family and our mission by participating in these campaigns. For more information, please visit [www.mountainfamily.org](http://www.mountainfamily.org).**

**Below you will find our first Basalt Campaign Newsletter, "Building Health for All." We hope it will shed more light on this valuable community asset coming to the Roaring Fork Valley later this fall.**

Sincerely,

Ross Brooks  
CEO, Mountain Family Health Centers  
Glenwood Springs, CO

**CONTACT US AT:**

970-945-2840

[gschalla@mountainfamily.org](mailto:gschalla@mountainfamily.org)

[www.mountainfamily.org](http://www.mountainfamily.org)

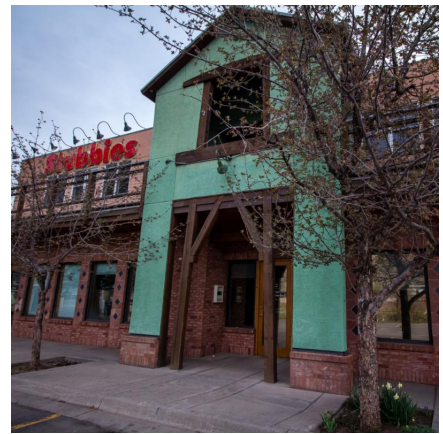
**GIVE**

## **INTRODUCTION TO THE BASALT INTEGRATED HEALTH CENTER**

Mountain Family Health Centers is a Federally Qualified Health Center system serving more than 19,200 patients in Garfield, Eagle, Pitkin and Rio Blanco counties on Colorado's Western Slope. Mountain Family's history, since its founding in 1978, is one of committed community members coming together to provide access to health care for all. Mountain Family believes health care is a human right, not a privilege.

The mission of Mountain Family Health Centers is to provide high quality integrated primary medical,

behavioral and dental health care in the communities we serve, with special consideration for the medically underserved, regardless of ability to pay. Mountain Family provides this care at four health centers, located in Basalt, Edwards, Glenwood Springs and Rifle, as well as one school-based health center located in Avon, a mobile dental van currently parked in El Jebel and three school-based SMILES tele-dentistry programs. Mountain Family clinics are certified as Level 3 Patient-Centered Medical Homes by the National Committee on Quality Assurance.



Mountain Family patients receive value-based care provided by an interdisciplinary team of health care and social services professionals. In addition to integrated primary medical, behavioral and dental health care, Mountain Family also provides care coordination services, assistance with public and private insurance applications and financial assistance programs, community education and health events.

## BUILDING HEALTH FOR ALL

To meet the high demand for affordable, integrated health care services for all Roaring Fork Valley residents, Mountain Family plans to relocate and expand the current Basalt Health Center this year, in 2018. The clinic will be relocated across Highway 82 to 123 Emma Road, the former Bristlecone Mountain Sports building, in partnership with Pitkin County and Aspen Valley Hospital. The building will be renovated to provide a new, 8,016-square-foot integrated health center with six medical exam and procedure rooms, two dedicated behavioral health rooms, four dental operatories, and possibly for the first time at Mountain Family, an internal pharmacy. The center will also have space for intake and financial assistance, patient outreach, care coordination services and conferencing. This expansion will allow Mountain Family to increase the number of patients served each year from 2,000 to 3,500.



## IMPACT

The newly expanded Mountain Family Basalt Integrated Health Center will enable Mountain Family to achieve its mission and four pillars of our strategic plan, which are improving the health of the population we serve, controlling the total cost of care for our patients, providing a world-class patient experience and promoting an engaged and empowered workforce.

With the expanded health center, Mountain Family can ensure all residents and workers in the Roaring Fork Valley have access to affordable integrated health care at one location, conveniently located on the Valley's main corridor and easily accessible by public and private transportation. This is particularly important for the more than 27% of residents (13,761 individuals) of the Valley who have low household incomes. They are living below 200% of the federal poverty level, which is just \$24,120 for an individual or \$49,200 for a family of four. Many of these residents do not have health insurance. In addition, very few providers in the Valley accept public insurance such as Medicaid or offer a sliding fee discount program. Without Mountain Family, many of these members of our community would not be able to access the health care services they need.



## TIMELINE

Currently our architecture and general contracting firm, Boulder and Associates, is putting the finishing touches on the design for the Basalt Health Center expansion. Permitting and finalizing the design will happen between now and early May. In June 2018, the Mountain Family construction team will begin work after Pitkin County vacates the former Bristlecone Mountain Sports building at 123 Emma Road. Our aggressive goal is to have the Basalt Integrated Health Center "soft opening" in October 2018, with a hard opening and ribbon cutting in December 2018.



## WHERE THE "BUILDING HEALTH FOR ALL" CAPITAL CAMPAIGN IS TODAY

Basalt Integrated Health Center Capital Campaign will raise \$2.5 million to renovate and equip the newly expanded state-of-the-art facility, increasing capacity for medical and behavioral health services and adding dental care and on-site pharmacy services. Funding partners include Pitkin County, Aspen Valley Hospital, state and local foundations, local businesses and individual donors.

Currently the Campaign has \$695,000 in the bank, with current submitted requests of \$900,000 and identified future requests of \$1,050,000. Mountain Family representatives and advocates are constantly establishing and maturing relationships with individuals and foundations in support of both the Basalt and Edwards campaigns.



## HOW TO HELP

**Create a connection.** Can you provide an introduction, a contact, a friendly suggestion to advance the campaign? Join us as we build a collaborative, community effort to put this health care resource on the map.

**Host an event.** Our biggest challenge is getting the word out. Would you like to host a civic or business gathering to learn more about Mountain Family Health Centers? These events are educational only, and we will not ask for money. Mountain Family will provide the food, drinks and support. Our presentation is 15 minutes or less and will feature a brief introduction, history, patient story, and a short look at the future. Then it's back to social conversations, and Mountain Family representatives can answer remaining questions publicly or privately.

**Tell us about an opportunity.** Is there an opportunity for us to host table at a public event? Perhaps we can present to your church or take part in a parade? The Mountain Family Development Team is always looking for new opportunities to reach a diverse cross section of the Roaring Fork Valley. Please email your ideas and events to [gschalla@mountianfamily.org](mailto:gschalla@mountianfamily.org) .



Visit [www.mountainfamily.org](http://www.mountainfamily.org) to learn more about Mountain Family Health Centers and the Building Health for All Capital Campaign. To discuss partnership opportunities, please contact Ross Brooks, Chief Executive Officer, at 970-945-2840, ext. 7209 or [RBrooks@mountainfamily.org](mailto:RBrooks@mountainfamily.org), or Garry Schalla, Development Director, at 970-945-2840, ext. 7290, 970-318-8018 (cell), or [gschalla@mountainfamily.org](mailto:gschalla@mountainfamily.org).

## CONCLUSION

Mountain Family Health Centers has a long history of ensuring access to health care for the most vulnerable among us. We envision a future in which all persons have access to the affordable, high quality, integrated primary medical, behavioral and dental health care they need for optimal health. To accomplish this, Mountain Family must expand its Basalt Health Center to meet the high need for these services in the community. The Building Health for All campaign will provide the funding to make this vision a reality, and we invite you to partner with us in this exciting and valuable endeavor.



### CONTACT US AT:

970-945-2840

[gschalla@mountainfamily.org](mailto:gschalla@mountainfamily.org)

[www.mountainfamily.org](http://www.mountainfamily.org)

GIVE

STAY CONNECTED



Thank you for your interest in The Basalt Integrated Health Center Campaign. If you do not wish to receive updates from us, please know you may opt-out at any time using the unsubscribe link below.

Mountain Family Health Centers, 1905 Blake Ave., Suite 101, Glenwood Springs, CO 81601

[SafeUnsubscribe™ {recipient's email}](#)

[Forward this email](#) | [Update Profile](#) | [About our service provider](#)

Sent by [gschalla@mountainfamily.org](mailto:gschalla@mountainfamily.org) in collaboration with

**Constant Contact** 

Try it free today